



EXTENDING EXTENSION

virtual shed meetings in a digital age

Helen Farley & Kate Reardon-Smith
Shahbaz Mushtaq, Neil Cliffe, Janette Lindesay, Adam Loch

Digital Futures-CRN
University of Southern Queensland



DIGITAL FUTURES-CRN

Collaborative Research Network (CRN)

- CRN partners: USQ, ANU & UniSA
- Federally-funded: \$5.1 M over 3 years (2012-2015)
- 5 projects (post doctoral research fellows, PhD scholarships)

DF-CRN sub-themes

- social and policy challenges in a digital future;
- participation in higher education; and
- technology rich learning environments.



DF-CRN PROJECT 3

Investigating the Impact of a web-based, 'discussion-support', agricultural-climate information system on Australian farmers' operational decision making

Project partners

- Australian Centre for Sustainable Catchments (ACSC)
- Australian Digital Futures Institute (ADFI)
- ANU, UniSA & CANEGROWERS

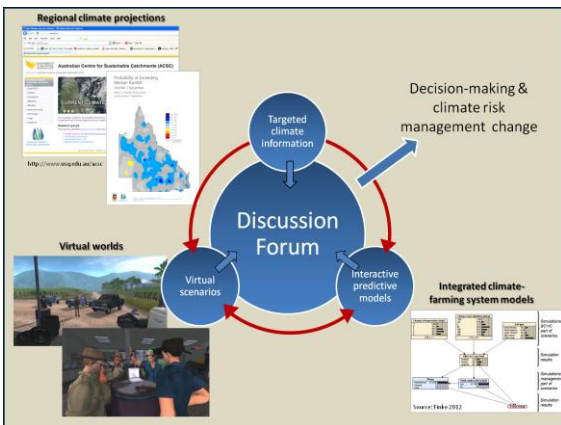
Project objectives

- to enhance farm management decision-making around climate risk
- to support sustainable (resilient) agricultural systems and rural communities

CLIMATE RISK MANAGEMENT

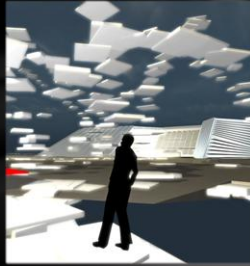


VIRTUAL WORLDS & EDUCATION



JIBE

- 3D immersive virtual world
- Hosted on external servers
- Decreased bandwidth requirements compared to other vws
- Decreased learning curve



CUSTOM AVATARS AND ENVIRONMENTS



Avatar Models



Click and Drag on the stand to rotate your Avatar
Background music: "depadu" by C438

Outfits



ADVANTAGES

- Reduce cost of hosting events
- Reduced cost and reduced time in attending events
- Reduced transport costs
- Reduced time away from the farm
- Accessible to producers from geographically distant regions
- Permanent record can be made of event for replay
- Demonstrations can be readily repeated
- Readily scalable
- Enhanced communication affordances

THE FUTURE

- Accessibility via mobile devices
- Augmented reality
- Augmented multi-user reality



SWEET SUCCESS –

developing machinima for Australian sugar farmers

Set: ... a typical Australian sugarcane farm ... coastal mountains, Queensland, shed, machinery, dog



SWEET SUCCESS – *developing machinima for Australian sugar farmers*



Avatars

ACKNOWLEDGEMENTS



Team members:

PhD candidate: Neil Cliffe (ACSC, USQ)

Research Fellow: Kate Reardon-Smith (ACSC, USQ)

ACSC (USQ) researchers: Roger Stone, Shahbaz Mushtaq, Torben Marcussen, Tek Maraseni

ADFI (USQ) researchers: Helen Farley, Joanne Doyle, Neil Martin

DF-CRN collaborators: Janette Lindesay (ANU), Adam Loch (UniSA)

Industry collaborator: Matt Kealley (CANEGROWERS)

Noel Jacobson & Amanda Hassett, Top Dingo ... www.topdingo.com/

This project is funded through the Australian Government's Collaborative Research Networks program